

# Integrated Tolling Plattform

## Satellics Sustainable Traffic Management

Mobility for the 21st century.

16th World Congress on ITS  
Stockholmsmässan, Sweden  
21st - 25th of September 2009





# Satellic Traffic Management GmbH. Mobility for the 21st century.

Friedemann Kirn,  
Account Director International

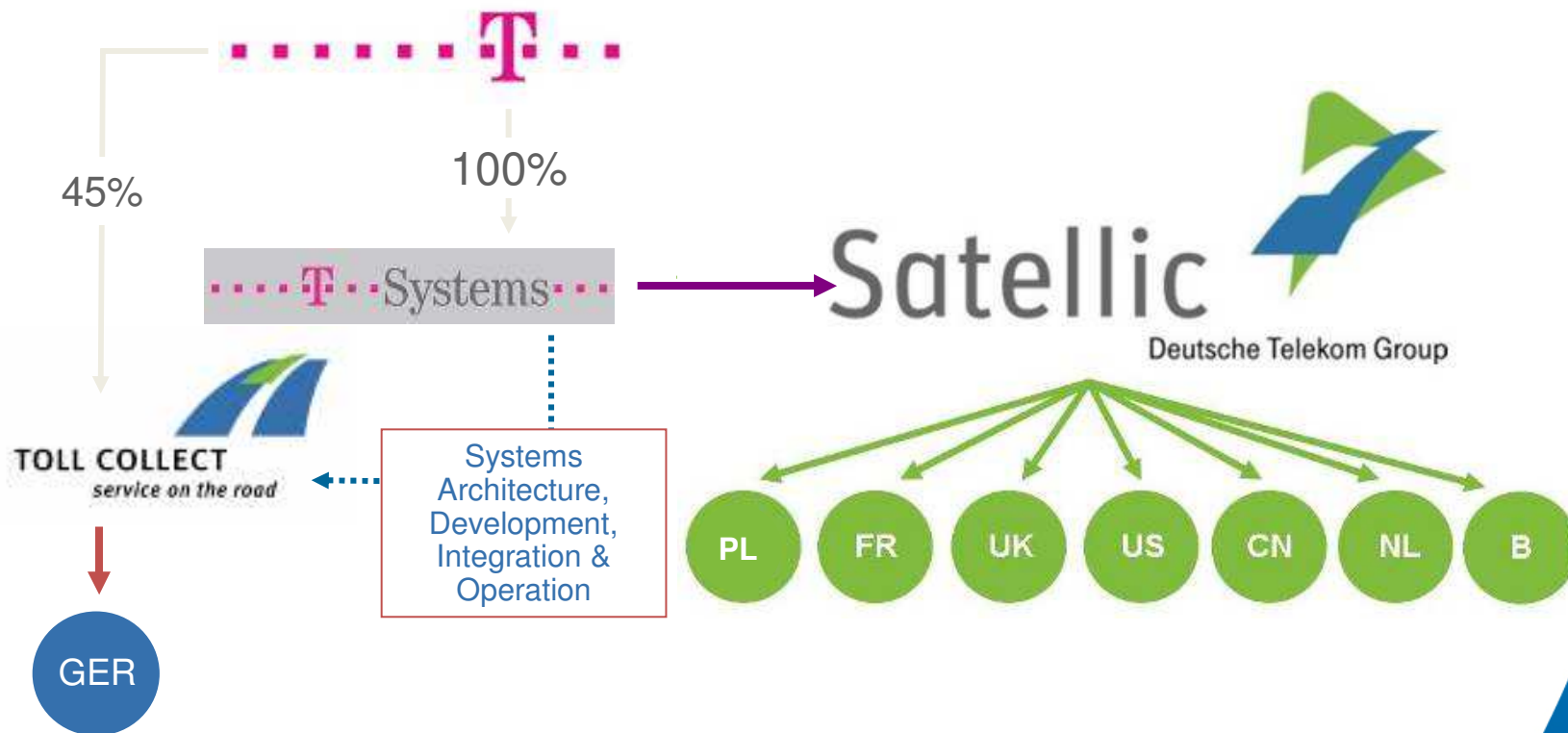


# Satellic - a global company for a sustainable future.

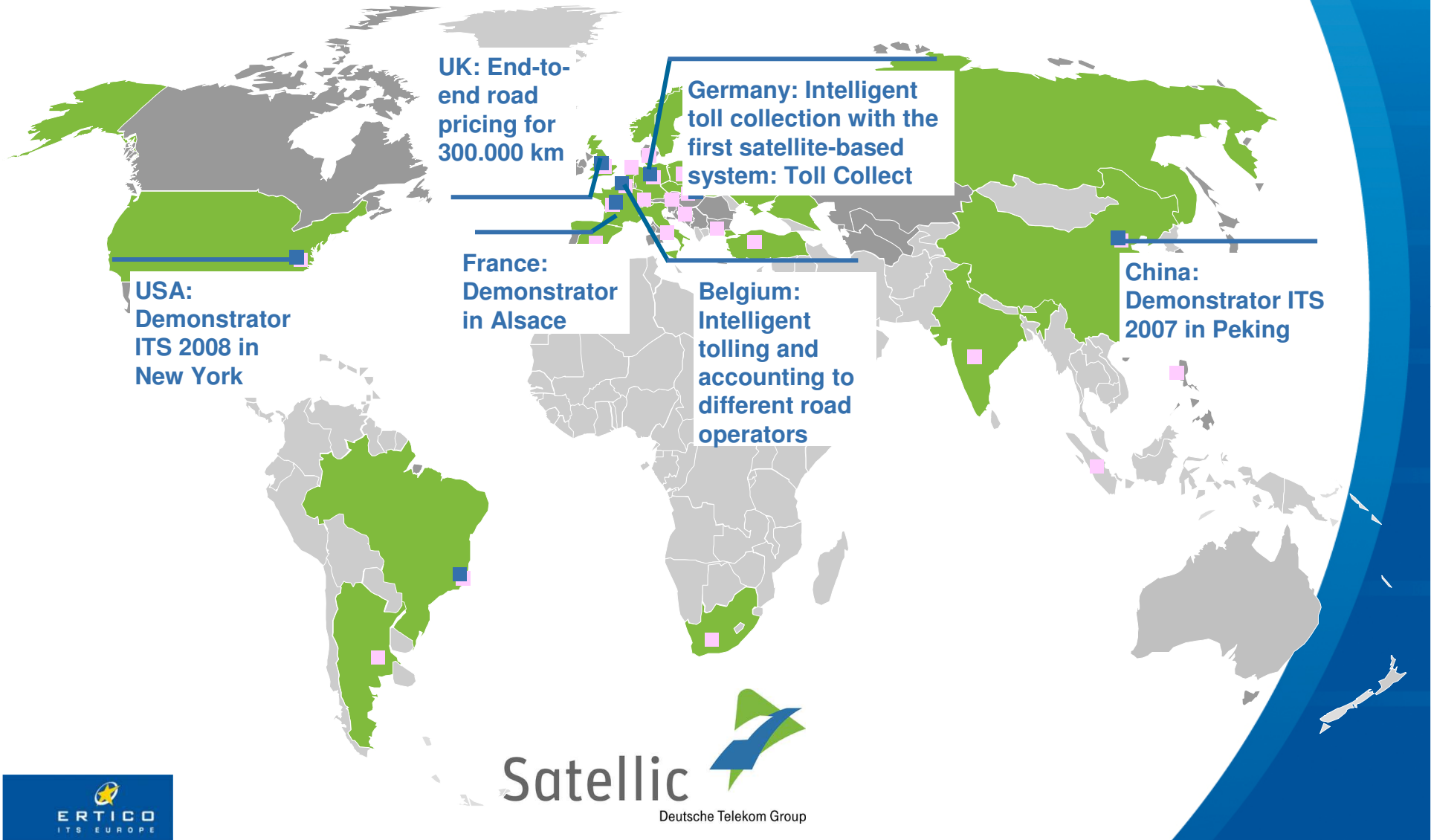
- n Professional system integrator for your specific needs.
- n Brings together substantial expertise in development, design, implementation and operation of complex road charging solutions.
- n Think Tank for Telematics Services in future-oriented Traffic Management Solutions.



# Satellic - a global company for a sustainable future.



# Satellic - Solutions and Activities worldwide.

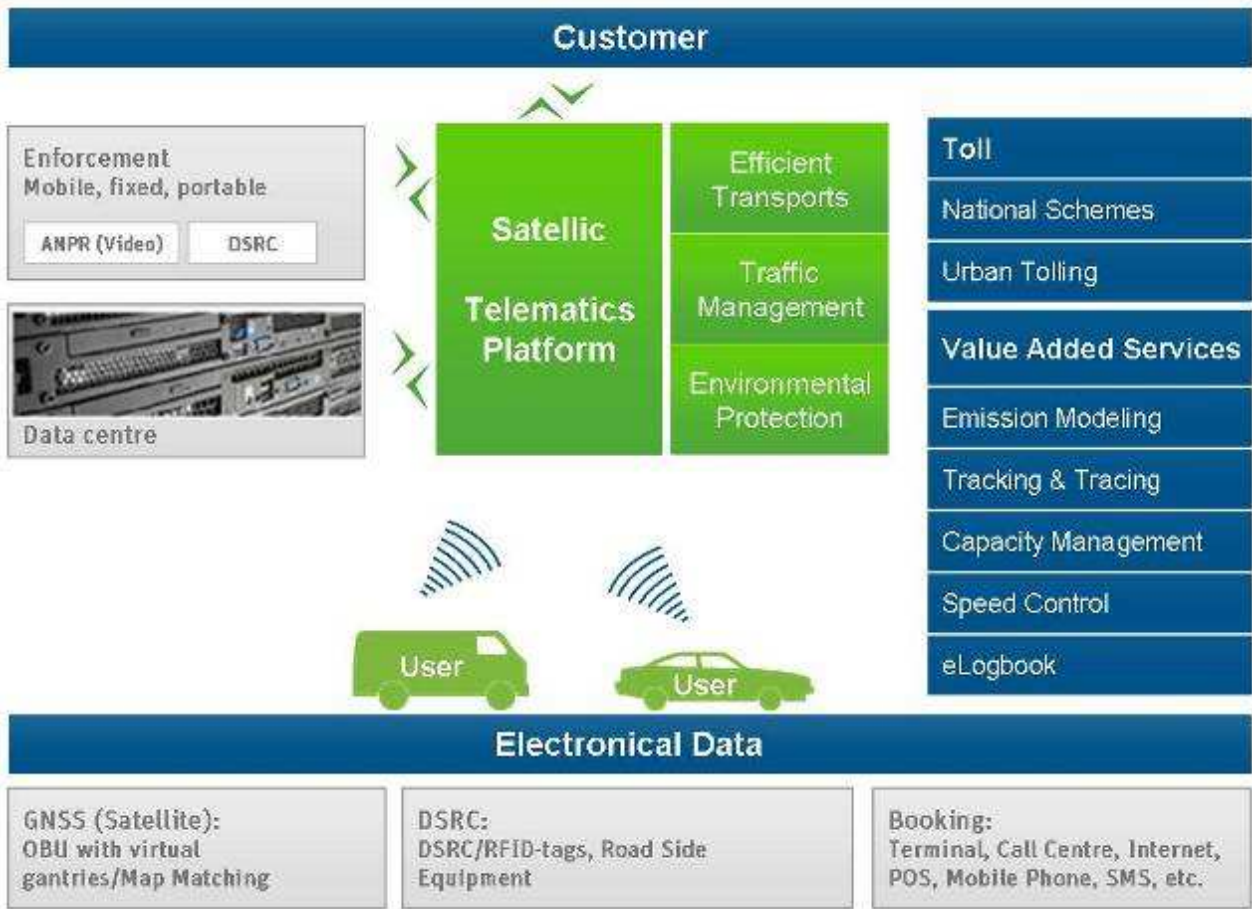




## Satellic Telematics Platform: The Intelligent Traffic Management Solution.



# Satellic Telematics Platform - One future-oriented Platform.



# Satellic Telematics Platform - a single, future-oriented platform.

- n Allows individual solution design according to customer requirements.
- n Enables integration of existing ITS-solutions.
- n Enables realisation of value added services.
- n Flexible and easily expandible.
- n Usability and interoperability, independent of technology constrains.

... to realise your ideas and meet your needs.

# Satellic Telematics Platform - tolling schemes.

## National Schemes

- n Finance infrastructure investment.
- n Pay-per-use principle (Internalisation of external costs).
- n Reduce emissions (e.g. CO2).
- n Reduce emission particulates.
- n Stimulate take-up of more environmentally friendly vehicles.



# Satellic Telematics Platform - tolling schemes.

## Urban Tolling

- n Intelligent management/optimi-sing of traffic flow in urban areas.
- n Reduce congestion/traffic peaks.
- n Reduce local air and environmental pollution.
- n Increase safety on the roads (road side equipment and road users).



# Satellic Telematics Platform - Value Added Services.

## Emission Modeling for smart pollution control

- n Keep the defined local immission limits (municipality/regional plans) “Green corridors”, “Green Cities”.
- n Contribute to cutting global emissions.



# Satellic Telematics Platform - Value Added Services.

## Tracking & Tracing

- n Intelligent management of freight transport to improve efficient asset utilisation (e.g. vehicles, traffic, space).
- n Monitoring transport of dangerous goods.



# Satellic Telematics Platform - Value Added Services.

## Capacity Management

- n Increase efficiency of freight transport in cities.
- n Reduce distances for freight transports in cities.
- n Optimise parking area capacity and trans-shipment centres.
- n Improve predictability of freight transport requests.
- n Establish management for “green” freight transport.



# Satellic Telematics Platform - Value Added Services.

## Speed control

- n Prepare information for the driver/user about driven velocity/speeding.
- n Prepare information about driving behaviour for insurance companies to create special driver profiles.
- n Prepare information for speeding ticket fine.



# Satellic Telematics Platform - Value Added Services.

## Electronic Vehicle Logbook

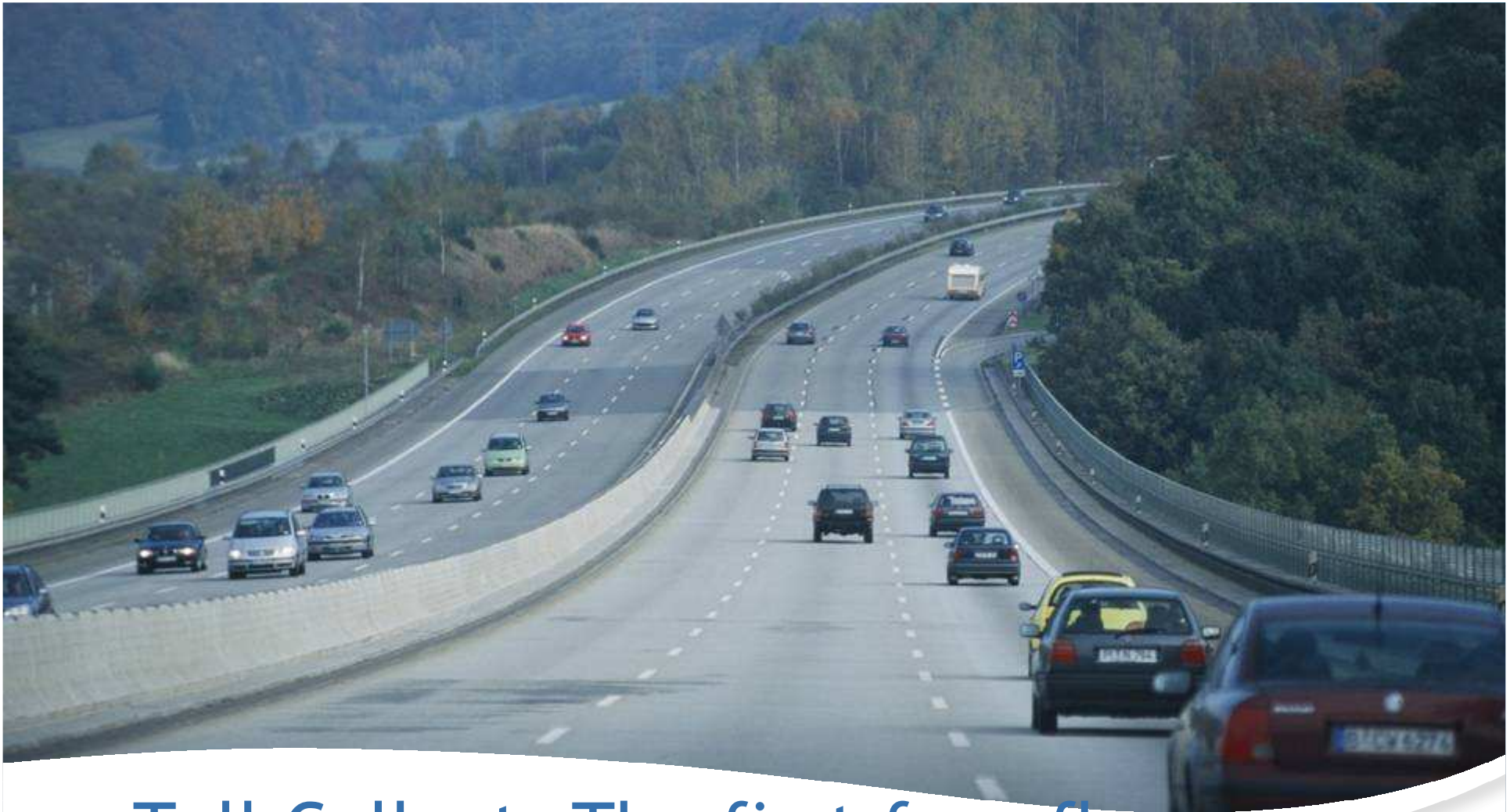
- n Input and storage of additional trip information by the user.
- n Ex-post reporting of the trips.





# Satellic Traffic Management: Our references.





# Toll Collect: The first free-flow satellite-based tolling solution.

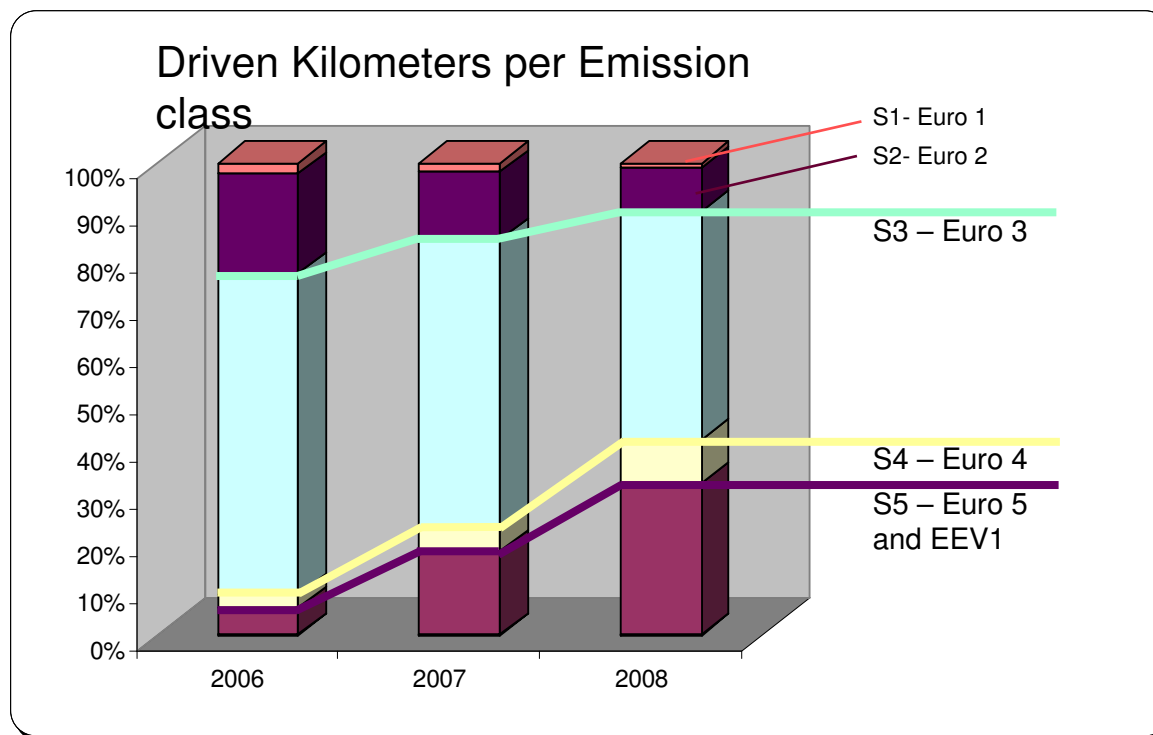


# Toll Collect - The Idea becomes Reality.

- n **Federal motorways**
  - n Length: 12,500 km (7.800 miles)
  - n Junctions: 2,213
  - n Interchanges: 250
- n **HGV liable to pay tolls**
  - n 620,000 equipped with OBE
  - n 938,000 registered vehicle
- n **Mileage subject to tolls**
  - n 22.7 bn vehicle km p.a.
  - n 35 % foreign trucks



# Toll Collect - A positive impact, increasing the number of environment-friendly HGVs on Europe's roads.



# UK Road Pricing: End-to-end road pricing solution for 300.000 km in England and Wales.

- n UK Road Pricing Demonstration Solution based on time, distance and place data acquisition.
- n Complete end-to-end road pricing service.
- n Consideration of many additional attributes: Road user class, vehicle/emission class, road types, time periods.
- n OBU procurement and management (smart client).
- n System integration and testing incl. Contact Centre.
- n Business process implementation and management.
- n Strong focus on the protection of perceived Road User Privacy.



Our Solutions: Reliable and accurate.  
With maximum data security



# Satellic your mobility partner

- n Planning, development, implementation and full-operation of Tolling Systems of every size you need.
- n Unique experience in future-proof GNSS technology, in a peer-to-peer partnership with you.
- n Flexibility - Independent of the used/planned technology.
- n Comprehensive experience in business process design.
- n Individual end-to-end integration of existing tolling systems.
- n Integration of solutions to enable Value Added Services.
- n Financial power and stability with the Deutsche Telekom Group.

Intelligent Telematics Solutions.  
Because Mobility Matters.

Thank you for your attention

[Friedemann.Kirn@satellic.com](mailto:Friedemann.Kirn@satellic.com)

[www.satellic.com](http://www.satellic.com)

Satellic   
Deutsche Telekom Group